

2019-2020

Sightseeing

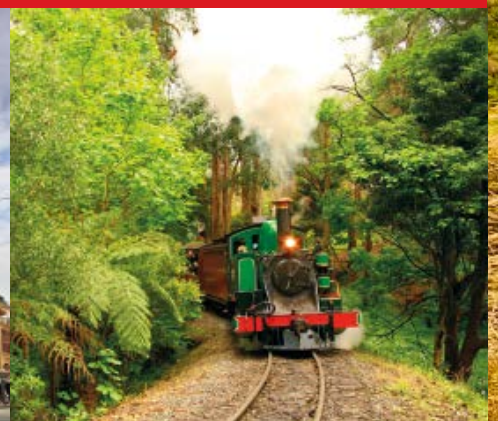
MELBOURNE

FROM
\$50

PENGUIN PARADE

MELBOURNE SIGHTS

PUFFING BILLY



6.30am-Midnight



1300 655 965

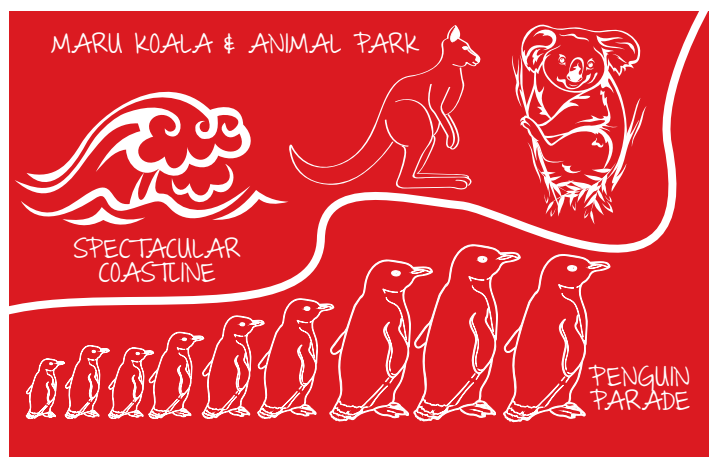
australiasightseeing.com.au

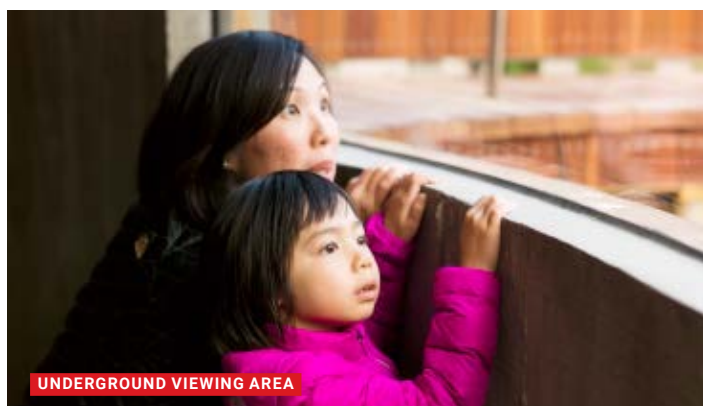
Phillip Island Penguins

PHILLIP ISLAND PENGUINS AND MARU KOALA & ANIMAL PARK

Phillip Island is home to an astounding array of wildlife, including Australia's largest fur seal colony, the Little Penguins and cuddly koalas. Only 90 minutes from Melbourne, the island features spectacular coastal scenery, charming heritage and an abundance of wildlife. Enjoy getting close to koalas and kangaroos before joining the Little Penguins at dusk as they emerge from the surf and waddle to their burrows. Each night at sunset the world's smallest penguins come ashore after a day's fishing at sea and it is truly a memorable natural wildlife experience. The elevated boardwalks and viewing stands allow you to enjoy all the action without disturbing them or their burrow homes. The Phillip Island Nature Park also offers four up-close ways to witness the Penguin spectacle (see next page).

- En route visit Maru Koala & Animal Park where you will be able to get in touch with wildlife
- Pat a koala, hand-feed an albino kangaroo, walk with the dingoes, talk to the parrots and even meet a gold possum – it's all possible!
- Have your photo taken with a koala (own expense)
- Journey along the coastal highway with French and Churchill Islands in the distance
- Cross the bridge at San Remo to reach Phillip Island
- Phillip Island is a natural habitat for koalas, Fur Seals, Short-tailed Shearwater, Little Penguins and more
- View the powerful southern coastline with its clean, sandy beaches and rocky shores
- Browse through the educational Penguin Parade Visitor Centre
- Learn about the Little Penguins and life on this stunning island
- Take your place in special viewing stands to watch the daily evening ritual
- Watch the Little Penguins as they battle the surf and make their way to their dune burrows
- Learn of the environmental and conservation methods that are initiated to ensure the remarkable wildlife and vulnerable geology of Phillip Island remain protected
- See the Little Penguins up-close as they return to their nests to greet their young families





CODE	DETAILS	PRICE
Tour M10	<p>Includes Entry to Maru Koala & Animal Park and the Penguin Parade</p> <p>Departs Daily 1.15pm from Federation Square, cnr Flinders & Russell Streets (earlier from your hotel – see back cover)</p> <p>Returns 10.30pm (Apr-Sep) and 11.30pm (Oct-Mar) (times approximate)</p>	<p>\$135 adult</p> <p>\$68 child</p>
Tour + Viewing Platform M10+P	<p>VIEWING PLATFORM PLUS</p> <p>Includes Entry to Maru Koala & Animal Park and Penguins Plus Viewing Platform</p> <p>More personalised wildlife viewing, limited to 300 people with ranger interpretation, providing closer viewing of the penguin arrival than the main viewing stands</p>	<p>\$165 adult</p> <p>\$83 child</p>
Tour + Underground Viewing Area M10+U	<p>UNDERGROUND VIEWING</p> <p>Includes Entry to Maru Koala & Animal Park and Underground Viewing Area</p> <p>Get a bird's-eye view as you watch the Penguin Parade at eye level. Enjoy the closest possible viewing of them in their natural habitat, while being under cover and out of the elements. Limited to 70 people</p>	<p>\$185 adult</p> <p>\$93 child</p>
Tour + Skybox M10+X	<p>SKYBOX</p> <p>Includes Entry to Maru Koala & Animal Park and Penguin Skybox</p> <p>Join a group of only 10 in the comfort of an exclusive, elevated viewing tower. Gain an excellent overview of Summerland Beach, interacting with the ranger</p>	<p>\$201 adult</p>
Tour + Private Penguins M10+B	<p>PRIVATE PENGUIN PARADE</p> <p>Includes Entry to Maru Koala & Animal Park and Private Penguins</p> <p>Join a group of up to 10, this ranger guided eco tour goes to an exclusive area on the beach to view Little Penguins. Participants will hear live commentary via personal headphones while sitting on mats</p>	<p>\$201 adult</p>



PUFFING BILLY, LOCAL CRAFTS & DANDENONG FOREST

Ride the Puffing Billy Steam Train for a memorable journey on Australia's most notable narrow gauge railway. Enjoy the lush ferns and dense forests of the nearby Dandenong Ranges.

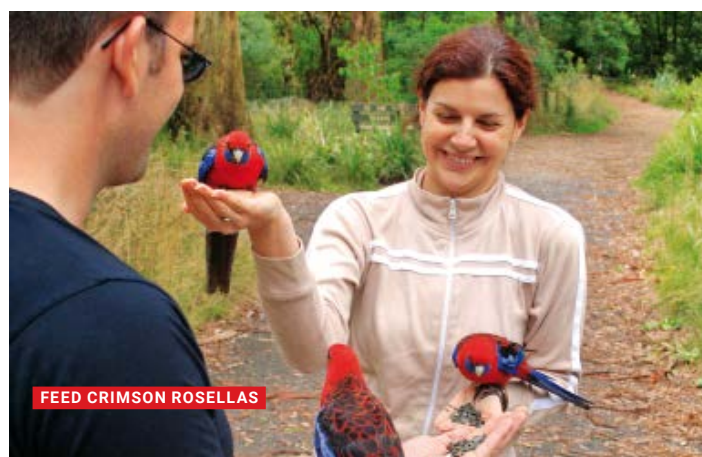
- Journey to the Dandenong Ranges to board the century-old Puffing Billy Steam Train for a 30-minute ride from Belgrave to Menzies Creek
- Marvel at the towering Mountain Ash and beautiful gullies of Sherbrooke Forest and enjoy the spectacular views and lush rainforest settings
- See the many native Australian birds and animals of the Dandenong Ranges – listen for their distinctive calls
- While admiring the fantastic forest scenery, look out for kookaburras, bell birds and king parrots
- Enjoy an included delicious home-made Devonshire Tea, hot fresh scones with jam and cream and the choice of tea or coffee, at Grants on Sherbrooke
- Hand-feed cockatoo birds in the Dandenong Ranges (seed provided)
- See the picturesque mountain villages scattered along the way
- Relax on the meandering drive that leads through lush forests and tall trees
- Visit the quaint village of Sassafras renowned for beautiful antiques and local craft
- Free time to wander and explore this little township



DEVONSHIRE TEA



FEED COCKATOOS



FEED CRIMSON ROSELLAS



CODE	DETAILS	PRICE
Tour M5	<p>Includes Puffing Billy Steam Train ride and Devonshire Tea</p> <p>Departs Tue, Thu & Sat 8.10am from Federation Square, cnr Flinders & Russell Streets (earlier from your hotel – see back cover)</p> <p>Returns 1.00pm approximately No hotel drop-offs</p>	<p>\$105 adult</p> <p>\$53 child</p>

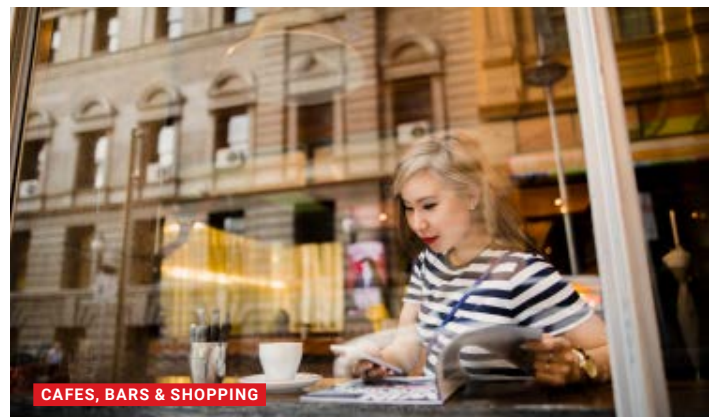
Melbourne



MARVELLOUS MELBOURNE CITY SIGHTS

Melbourne is a wonderful blend of architectural heritage, modern skyscrapers and contemporary designs, featuring vibrant cafés, cosmopolitan restaurants, colourful parklands and beautiful waterways.

- Discover the city highlights of Melbourne
- Explore the cosmopolitan city with its wide boulevards and fine historic buildings
- See tree-lined Collins Street, the ultimate shopping strip and business centre
- View fine examples of Melbourne's architectural splendour, including St. Paul's Cathedral and the Princess and Regent Theatres
- See Melbourne Town Hall, the Royal Exhibition Buildings and Federation Square
- Visit the beautiful Fitzroy Gardens
- Explore Cook's Cottage (optional). Captain Cook discovered the east coast of Australia. His parents' cottage was sent from England and reassembled here in Fitzroy Gardens
- See the bustling Queen Victoria Market
- See Parliament House and the Windsor Hotel
- Drive alongside the famous Melbourne Grand Prix track around Albert Park
- See our world-renowned sporting arenas including the Melbourne Cricket Ground (MCG) and Rod Laver Arena
- Pay tribute to the soldiers of war at the Shrine of Remembrance
- View Southbank – a world of waterfront shopping, dining and the arts
- View Port Phillip Bay, the Yarra River and Victorian Arts Centre, and see the Melbourne Aquarium
- Cross the Bolte Bridge for amazing views of the city skyline and bayside suburbs
- Add on an afternoon cruise down the Yarra River, passing the development at Docklands while enjoying amazing water views (M1+C)
- Make a whole day of it and add on a visit to the Melbourne Zoo or Sea Life Melbourne to the end of your city tour (M1+Z or M1+A)



CAFES, BARS & SHOPPING



COOK'S COTTAGE



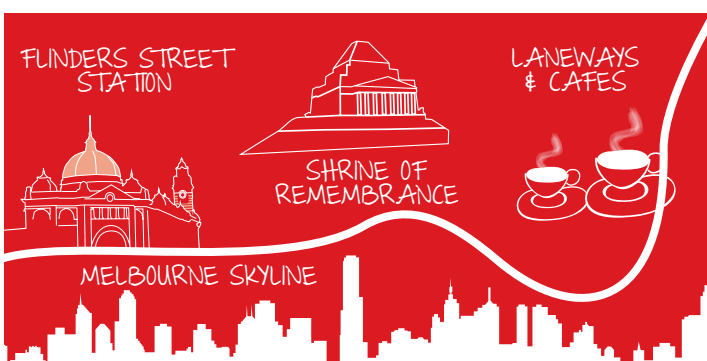
FEDERATION SQUARE

City Sights

FROM
\$50
HALF DAY



CODE	DETAILS	PRICE
Tour M1	Includes City Tour Departs Daily 8.15am from Federation Square, cnr Flinders & Russell Streets (earlier from your hotel – see back cover) Returns 11.50am approximately Tour concludes at Federation Square	\$50 adult \$25 child
Tour + River Cruise M1+C	Includes City Tour and 1 hour Yarra River Cruise Departs Daily 8.15am Returns 1.00pm approximately Tour concludes at Princess Bridge	\$77 adult \$38 child
Tour + Melbourne Zoo M1+Z	Includes City Tour and entry to Zoo Departs Daily 8.15am Returns 11.45am approximately Tour concludes at Federation Square Make your own way to the Zoo at your convenience	\$88 adult \$44 child
Tour + Sea Life Melbourne M1+A	Includes City Tour and entry to Aquarium Departs Daily 8.15am Returns 11.45am approximately Tour concludes at Federation Square Make your own way to Sea Life at your convenience	\$92 adult \$53 child



Mornington Peninsula Small Group

\$135
FULL DAY

MORNINGTON PENINSULA

Travel out of the metro bustle of Melbourne and discover the Mornington Peninsula, a tucked-away region boasting storybook scenery dotted with cute hobby farms, quaint townships and rolling hills. Only an hour's drive from Melbourne, the Mornington Peninsula is brimming with boutique wineries, fruit orchards and historic attractions.

- Visit Main Ridge Dairy, one of the delightful experiences you'll have on the Mornington Peninsula and if you've never tasted goat cheese, we suggest you sit back and be ready for a taste sensation
- Enjoy tastings at T'Gallant Winery, the birthplace of Australian Pinot Grigio. You'll see a selection of artisan wines, influenced by European tradition and made with an Australian twist
- The Mock Red Hill Orchard produces organic fresh fruit, apple juice, apple ciders and vinegar. At the Cider Lounge you're invited to try a cider or sparkling juice and even pick up some bottles to take home
- Stop for lunch in Flinders (own expense), where you'll have time to explore this quaint township. The amazing sea views will take your breath away!
- Visit Mornington Peninsula Chocolaterie & Ice Creamery in Flinders and explore the operating chocolate factory. Try their award-winning chocolates, handcrafted to perfection
- At Sunny Ridge Strawberry Farm, you can pick your own strawberries (Nov-Apr & own expense) and sample liqueurs and ciders
- Sample the delicious wines and soak up the rural atmosphere at a local boutique winery
- Finish your day in the Mornington Peninsula with a visit to Dromana Beach to photograph the famous multi-coloured bathing boxes



CODE	DETAILS	PRICE
Tour M17	<p>Includes Wine & local produce tastings</p> <p>Departs Thu, Sat & Sun 7.45am from St. Paul's Cathedral, cnr Flinders & Swanston Streets (earlier from your hotel – please enquire at time of booking for hotel pick-up details)</p> <p>Returns 5.45pm approximately</p> <p>Operated by Autopia Tours in a mini-coach. This tour is not suitable for children/infants.</p>	<p>\$135 adult</p>

Yarra Valley Gourmet Delights Small Group

NEW

\$249
FULL DAY

YARRA VALLEY GOURMET

If you love fruit, you'll be able to pick your own when you visit an orchard that boasts fresh fruit every day of the year. Plus, you'll experience the orchard on a tractor ride. Then call in at a boutique winery to taste a selection of their wines. You'll arrive in time for lunch at your next winery, and the cherry on the top of your day is dessert at a chocolaterie and ice creamery!

- Your first stop is the family-run Rayner's Orchard, where you'll have a true rustic experience - an hour of fruit picking and tasting fun, while travelling by tractor trailer throughout the orchard
- With around 450 varieties, you're guaranteed the freshest fruit year-round
- Continue through the beautiful countryside to a renowned winery to taste a range of their wines
- Tantalize your taste buds at Balgownie Estate Wines during an unforgettable dining experience at award-winning Rae's Restaurant, where a team of chefs proudly incorporate the best of local produce from the Valley
- Your day wouldn't be complete without a visit to the Yarra Valley Chocolaterie & Ice Creamery, where you will be treated to a delicious dessert
- Enjoy a tasting experience of one of their unique chocolate bar ranges: Gourmet Collection, Kitchen Garden, Valley Bush Tucker or Single Origin
- There's free time to watch the art of chocolate-making by a team of talented European Chocolatiers, and browse through the showroom 'choc-filled' with over 250 different chocolate products



YARRA VALLEY CHOCOLATERIE AND ICE CREAMERY



RAYNER'S ORCHARD



CODE

**Tour
M30**

DETAILS

Includes Lunch, and wine, fruit and chocolate tasting

Departs Tue, Thu & Sat 9.00am from Federation Square, Melbourne, cnr of Flinders & Russell Streets (earlier from your hotel – see back cover)

Returns 5.00pm approximately

PRICE

\$249

adult

\$125

child

Yarra Valley Wineries

FROM
\$165
FULL DAY

YARRA VALLEY WINERIES & PUFFING BILLY

Journey into the prosperous heart of amazing wine country to the Yarra Valley. En route, ride aboard Australia's oldest steam train, the Puffing Billy. Meander through the scenic mountains and valleys before visiting Rochford Wines.

- Enjoy the picturesque mountain villages scattered along the way and the views of Melbourne's skyline
- Marvel at the spectacular views and lush rainforest settings of the Sherbrooke Forest
- Beautiful Sherbrooke Forest is home to lyrebirds, crimson rosellas, cockatoos and kookaburras – look out for these native birds
- Enjoy an included traditional Devonshire Tea of homemade scones, served warm with jam and cream, and tea or coffee
- Ride the Puffing Billy Steam Train through the towering Mountain Ash and beautiful lush fern gullies of Sherbrooke Forest
- Enjoy lunch at Rochford Wines and a glass of one of their superb regional wines (M35+L)
- Relax as you sample the Yarra Valley wines
- Tantalise your taste buds at a boutique winery where you may sample and buy a selection of quality local wines, including cabernet, chardonnay, semillon and pinot
- Further tastings at another Yarra Valley winery
- Spend a day enjoying the beautiful Victorian countryside exploring premium wineries

CODE

DETAILS

PRICE

**Tour +
Puffing
Billy
M35**

Includes Puffing Billy Steam Train ride, Devonshire Tea, and wine tastings

Departs Mon, Wed, Fri & Sun (Apr-Sep) Mon, Tue, Wed, Fri & Sun (Oct-Mar) 8.10am from Federation Square, cnr Flinders & Russell Streets (earlier from your hotel – see back cover)

Returns 5.30pm approximately

\$165
adult

\$83
child

**Tour +
Puffing
Billy +
Lunch
M35+L**

Includes Puffing Billy Steam Train ride, Devonshire Tea, 2 course lunch with a glass of wine at Rochford Wines, wine tastings

\$211
adult

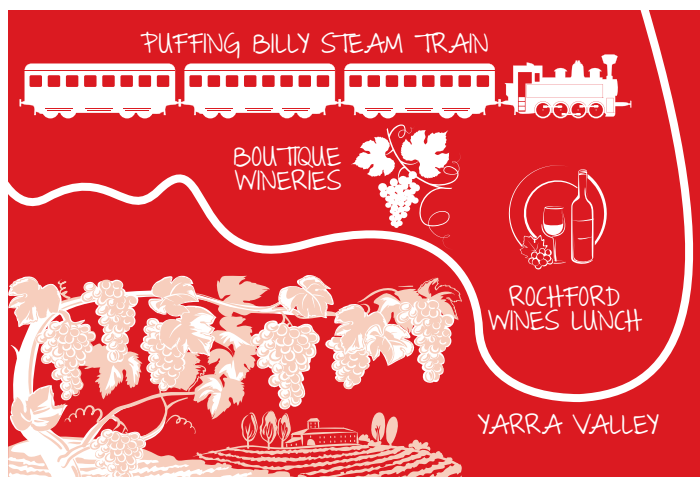
\$107
child



DEVONSHIRE TEA



ROCHFORD WINES



Healesville Wildlife & Puffing Billy

\$165
FULL DAY

HEALESVILLE WILDLIFE & PUFFING BILLY

Ride the renowned Puffing Billy Steam Train as it winds its way through lush ferns and towering timbers. Relax and enjoy the great scenery. Stroll through Healesville Sanctuary and see unique native creatures.

- Enjoy the lush ferns and dense forests of the Dandenong Ranges
- Enjoy an included traditional Devonshire Tea of homemade scones, served warm with jam and cream, and tea or coffee
- Hand-feed rosellas, cockatoos, and galahs (seed provided)
- Ride the Puffing Billy Steam Train for a memorable journey on Australia's most notable narrow gauge railway
- Wander among Australia's unique birds and animals in the natural bushland setting of Healesville Sanctuary, home to over 200 species of Australian wildlife
- Enjoy a private tour with a Healesville Sanctuary volunteer
- Get up-close to koalas, kangaroos, wombats, emus, cockatoos, parrots and much more
- Witness the amazing and exciting 'Spirits of the Sky' demonstration within the sanctuary
- Visit Healesville Sanctuary's renowned nocturnal house, with its shy platypus
- Every Sunday, you can learn about the local Wurundjeri Aboriginal people. Hear of their culture, traditions and stories of the Dreamtime. Listen to the sounds of the didgeridoo and be amazed at their mastery making that Boomerang really fly!

CODE

**Tour +
Puffing
Billy
M15**

DETAILS

Includes Puffing Billy Steam Train ride, Devonshire Tea, entry into Healesville Sanctuary

Departs Mon, Wed, Fri & Sun (Apr-Sep) Mon, Tue, Wed, Fri & Sun (Oct-Mar) 8.10am from Federation Square, cnr Flinders & Russell Streets (earlier from your hotel – see back cover)

Returns 5.30pm approximately

PRICE

\$165
adult

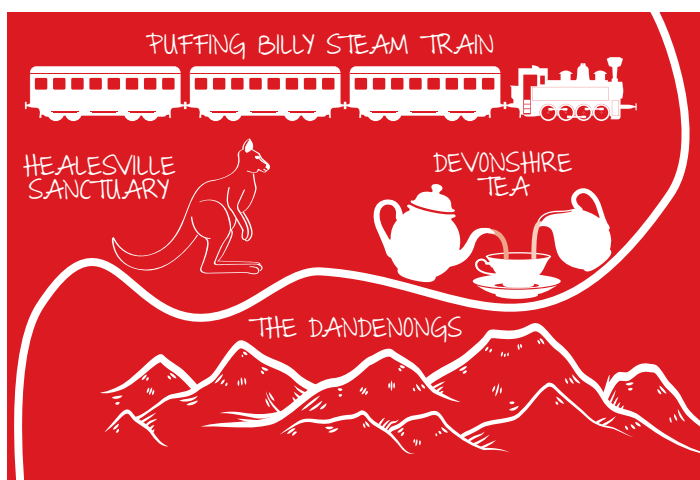
\$83
child



AUSTRALIAN WILDLIFE AT HEALESVILLE SANCTUARY



PUFFING BILLY STEAM TRAIN



Sovereign Hill



FROM
\$150
FULL DAY

SOVEREIGN HILL & HISTORIC BALLARAT

Travel to Ballarat and visit Sovereign Hill, a perfectly re-created 1850s goldmining settlement. Explore the shops and wander the main street to visit goldsmiths and craftsmen of another time. Journey through the town of Ballarat and see the Victorian architecture of a prosperous era.

- Journey back in time at Sovereign Hill and share the experiences of the locals at an original 1850s goldmining settlement
- See tradesmen and craftsfolk at work
- Cross the original route of the early horse-drawn stagecoaches
- Try your luck panning for gold, visit the museum or tour an underground mine
- Catch a ride in a traditional horse-drawn carriage or ride a stage coach (own expense)
- Pass by and discover the turbulent story behind one of Australia's most notorious incidents, at the Eureka Stockade Centre in Ballarat
- View Ballarat's historic sites and beautiful Victorian architecture, a thriving monument to the town's golden era of prosperity
- Visit the Gold Museum
- Enjoy browsing the unique period-style stores along with real life characters and story re-enactments
- Get up close to Australia's wildlife at the Ballarat Wildlife Park (M13+W)
- Get as close as you dare to a crocodile at a feeding session and see Tasmanian Devils, wallabies, giant turtles and emus (M13+W)



CODE	DETAILS	PRICE
Tour M13	Includes Entry to Sovereign Hill Departs Tue, Thu & Sat 8.20am from Federation Square, cnr Flinders & Russell Streets (earlier from your hotel – see back cover) Returns 5.30pm approximately	\$150 adult \$75 child
Tour + Wildlife Park M13+W	Includes Entry to Sovereign Hill and Ballarat Wildlife Park	\$175 adult \$91 child

The Grampians Small Group

\$135
FULL DAY

GRAMPIANS NATIONAL PARK

Be inspired by the sheer majesty of Grampians National Park, with its wilderness of rugged cliffs and cascading waterfalls, all forming the south-west section of the Great Dividing Range. See Australian wildlife and afterwards, tour the nearby township of Halls Gap in your small group vehicle.

- Stop at the charming township of Beaufort and enjoy morning tea
- Head into the heart of Grampians National Park
- Stretch your legs with a walk through the Wonderland Ranges
- Experience the awe-inspiring grandeur of the Grampians National Park or 'Gariwerd', as the local Aboriginal people call it
- Visit picturesque Halls Gap, a unique village tucked away in the heart of the Grampians
- Relax during a picnic lunch at the Boroka Lookout
- Visit Brambuk, the National Park & Cultural Centre, bringing to life the amazing history and culture of the local Aboriginal communities
- Enjoy views at Reeds Lookout and the Balconies
- Admire the Jaws of Death
- Enjoy an easy walk to MacKenzie Falls Lookout and see a spectacular series of waterfalls. The more energetic can walk to the bottom (approximately 400 steps)
- Stop for an evening meal break (own expense) before returning to Melbourne



CODE	DETAILS	PRICE
Tour M39	<p>Includes Morning tea and picnic lunch</p> <p>Departs Wed, Fri & Sun (May-Oct) and Tue, Wed, Fri, Sat & Sun (Nov-Apr) 7.15 am from St. Paul's Cathedral, cnr Flinders & Swanston Streets (earlier from your hotel – please enquire at time of booking for hotel pick-up details)</p> <p>Returns 8.30pm approximately</p> <p>Operated by Autopia Tours in a mini-coach. *This tour is not suitable for infants or children 7 years and under, due to the nature of the tour and amount of walking involved. Child price applies from 8 to 12 years old.</p>	<p>\$135 adult</p> <p>\$95* child</p>

Great Ocean Road



GREAT OCEAN ROAD ADVENTURE

Beat the crowds when you travel on the inland road, to experience the amazing Twelve Apostles along the Great Ocean Road before most others. Enjoy one of the world's great coastal drives, with its dramatic scenery of striking contrasts. The region boasts powerful seas, golden beaches, peaceful townships, giant cliffs and lush forests. Stroll along the pristine sandy beaches and wander through sleepy seaside holiday towns. View majestic monoliths abruptly rising from the sea. Discover the deep fern gullies and eucalypt trees as they meet the sheer coast that plunges into the sparkling Southern Ocean and hear the legends of 'The Shipwreck Coast'.

- Travel by the city of Geelong and Corio Bay
- Enjoy a morning tea stop (own expense) in a country township
- Inspect the fascinating Twelve Apostles Visitor Information Centre
- See the amazing Twelve Apostles – limestone stacks rising dramatically from the Southern Ocean, an amazing photo opportunity
- Walk along the boardwalk and enjoy the scenery from various viewing platforms
- Be swept away by the romantic and tragic story of love and lives lost aboard the schooner, Loch Ard
- Marvel at Loch Ard Gorge where millions of years of erosion have sculpted these incredible landmarks
- Don't forget your cameras as we embark on several great photo locations including Razorback and Island Arch
- Visit Port Campbell, stopping for lunch (own expense) with time to explore in this charming fishing village and summer holiday resort, which is sheltered by cliffs and Norfolk Pines
- Discover the tragic history of over 50 ships wrecked along this rugged coastline as your Driver Guide tells you the stories
- Truly one of the world's great scenic coastal drives
- Witness the fabulous spectacle of massive natural erosion
- View the lovely seaside village of Lorne and stop at Apollo Bay for afternoon tea (own expense)
- Tour the length of the Great Ocean Road passing towering limestone cliffs, sweeping white beaches and stunning forest scenery
- See the spectacular night lights of Melbourne as you cross the West Gate Bridge



APOLLO BAY



SPECTACULAR LOOKOUTS

CODE

**Tour
M4**

DETAILS

Departs Daily 8.00am from Federation Square, cnr Flinders & Russell Streets (earlier from your hotel – see back cover)
Returns 8.00pm approximately

PRICE

\$135

adult

\$68

child

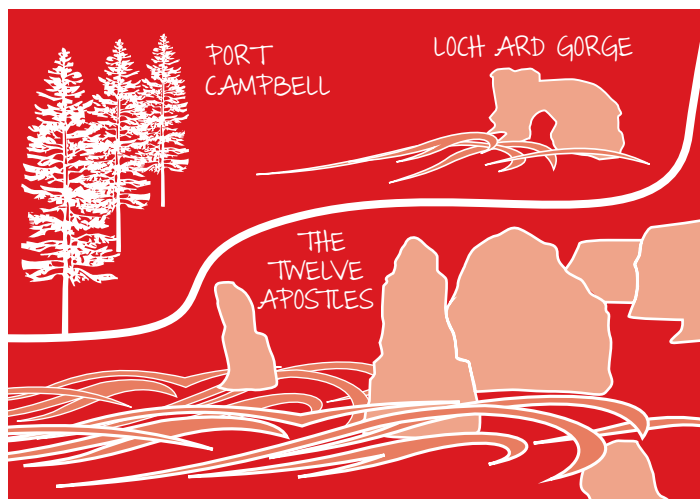
Adventure



\$135
FULL DAY



LIMESTONE CAVE AT LOCH ARD GORGE



LOCH ARD GORGE

BOOKING CONDITIONS

PRICES AND ITINERARIES

This brochure is effective from 01 April 2019 to 31 March 2020. Prices shown are in Australian currency, include GST and supersede all prices previously advertised. The operator reserves the right to cancel tours and amend prices, itineraries and days of operation as required. At times it may be necessary to provide alternative transport. Any personal expenses incurred by a client as a result of any delay, alteration or curtailment of any tour, whether caused by flooding or any other causes are the responsibility of the client. Refunds are not available for wet weather or changing weather conditions. Clients are strongly advised to take out travel insurance. All prices are valid subject to Government, hotel and fuel surcharges.

CHILD PRICES

Children 2 to 15 years of age are entitled to the child price on ½ Day and 1 Day Tours. Infants up to and including 1 year old are free of charge when sitting on a paying adult's seat.

CONCESSION PRICES

Australian Senior Card Holders, Australian and New Zealand pensioners and full-time Australian Students travel on concessional prices where applicable. Please have your card with you. Some tours not operated by Sightseeing Melbourne are excluded from this discount.

CANCELLATIONS

Cancellation fees will be levied relative to the amount of notice given: less than 6 days – 50% of tour price, within 24 hours or no show – 100% of tour price.

TOUR PARTICIPATION

On a Sightseeing Melbourne tour, children under 18 years of age must be accompanied by an adult. Clients with disabilities are welcome on Sightseeing Melbourne tours providing they are accompanied by an able-bodied companion and do not require special assistance from Sightseeing Melbourne personnel. Sightseeing Melbourne reserves the right to refuse to carry anyone if it is felt the individual cannot cope with the requirements of coach tour travel and who may require services and facilities that Sightseeing Melbourne cannot guarantee will be available. You agree to not hold Sightseeing Melbourne responsible for any decision made by Sightseeing Melbourne or any service provider to refuse to carry you, provide any facilities or accommodation to you or to provide any service to you.

SMOKING

Government regulations prohibit smoking inside tourist coaches within Australia. Please restrict smoking to the ample stops en route.

OPTIONAL TOURS & SELECTED INCLUDED TOURS INCLUDING CRUISES

These tours are not operated by Sightseeing Melbourne or by persons or companies associated with Sightseeing Melbourne. Therefore we cannot and do not take any responsibility whatsoever for any injury or loss of any type arising in any manner including whether as a result of negligence or otherwise.

PHOTOGRAPHY

A selection of photography in this brochure has been supplied by Brian Dullaghan, Rochford Wines, Phillip Island Nature Park, Visions of Victoria, Tourism Australia and others.

FOR FULL BOOKING CONDITIONS VISIT:

australiasightseeing.com.au

CALL 1300 655 965

6.30am–Midnight

EMAIL

res@australiasightseeing.com.au

ONLINE

australiasightseeing.com.au



FREE HOTEL PICK-UP TIMES

Please be outside your hotel 5 minutes prior to pick-up time

	AM	M30	M10
AAT Kings (Federation Square)	7.45	8.45	1.00
Atlantis Hotel	7.15	Join at Crowne Plaza	
Adina Grand Apartments (Queen St)	7.25	Join at Novotel Melbourne on Collins	
Como Hotel South Yarra	6.50	Join at AAT Kings Federation Square	
Crown Metropol	7.20	Join at Crowne Plaza	
Crown Promenade	7.15	Join at Crowne Plaza	
Crown Towers	7.20	Join at Crowne Plaza	
Crowne Plaza	7.25	7.55	12.15
Holiday Inn on Flinders	7.30	Join at Crowne Plaza	
Ibis Swanston Street	7.00	Join at Ibis Therry Street	
Ibis Therry Street	7.30	8.25	12.15
InterContinental Hotel	7.35	Join at Crowne Plaza	
Langham Hotel	7.10	Join at AAT Kings Federation Square	
Mantra on Russell	7.40	Join at AAT Kings Federation Square	
Marriott (Exhibition St)	7.30	Join at AAT Kings Federation Square	
Mercure Grand on Swanston	7.35	Join at AAT Kings Federation Square	
Mercure Pullman Albert Park	6.55	Join at AAT Kings Federation Square	
Mercure Welcome Hotel	7.35	Join at AAT Kings Federation Square	
Novotel St Kilda	6.40	Join at AAT Kings Federation Square	
Novotel Melbourne on Collins	7.35	8.35	12.50
Oaks on Market	7.35	Join at Novotel Melbourne on Collins	
Pan Pacific Melbourne	7.00	Join at Crowne Plaza	
Park Hyatt Melbourne	7.25	Join at AAT Kings Federation Square	
Pullman on the Park (East Melbourne)	7.05	Join at AAT Kings Federation Square	
Radisson on Flagstaff Gardens	7.15	8.10	12.30
Rendezvous Hotel Melbourne	7.40	Join at AAT Kings Federation Square	
Savoy Hotel on Little Collins	7.10	Join at Crowne Plaza	
Short Stay Apartments (187 City Road)	7.10	Join at AAT Kings Federation Square	
Sofitel Melbourne on Collins	7.15	Join at AAT Kings Federation Square	
Travelodge Docklands	7.05	7.45	12.05
Windsor Hotel	7.20	Join at AAT Kings Federation Square	

Please enquire at time of booking for hotel pick-up details for M17 and M39

Please call 1300 655 965 to reconfirm your pick-up location and time 24-48 hours prior to your travel date.



WHEN BUYING 2 OR MORE OF THE ELIGIBLE MELBOURNE DAY TOURS*

Great Ocean Road Adventure **M4**
 Phillip Island Penguins & Maru Koala & Animal Park **M10**
 Sovereign Hill & Historic Ballarat **M13**
 Puffing Billy & Healesville Wildlife Sanctuary **M15**
 Yarra Valley Wineries & Puffing Billy **M35**

\$260 | 2 Tours Code: SS02

\$360 | 3 Tours Code: SS03

*Based on availability. Ask for discount at time of booking.

Sightseeing

